



mosaic | partners

diversity & inclusion talent specialists

Talent Acquisition



Financial Services

Back Office Operations | Middle Office Trade Support Specialists



diversity & inclusion talent specialists

Clients Coverage

Asset Management
Broker Dealers
Fund Administration
Hedge Funds
Investment Banks
Investment Management
Mortgage Firms
Mutual Funds
Private Equity
Wealth Management

Product Coverage

ABS | Asset Backed Securities
ABCP | Asset Backed Commercial Paper
Brady Bonds
CDO | Collateral Debt Obligation
CLO | Collateral Loan Obligation
CMO | Collateral Mortgage Obligation
Commodities
Convertible Arbitrage
Convertible Bonds

Job Functions Coverage

ACATS
Allocations
AML | KYC
Business Analyst
Buy-Ins | Fail Control
Cash Management | Funding
Client Services
COD
Collateral Management
Compensation
Confirmations
Corporate Actions | Reorganization
Custody
Credit Analyst

Data Governance
Dividends | P&I
Documentation
Emerging Markets
ID Affirmation
Investigations
Letters of Credit
Loan Administration
Loan Closing
Loan Origination
Loan Processing
Loan Syndication
Margin
P&I

P&L | Product Control
P&S
Performance Attribution
Performance Measurement
Portfolio Accounting
Portfolio Administration
Pricing
Prime Brokerage
Private Banking
R&D
Reconciliation
Retirement Plans
Risk Management
Sales Assistant

Security Masterfile
Settlements (DTC | INTL)
Stock Loan | Sec Lending
Trade Support
Trader's Assistant
Treasury
Trust
Wealth Management
Wire Transfers

Futures
Government (FHMA | Freddie Mac | GNMA)
Hedge Funds
High Yield Bonds
Loans (Distressed | Par)
Merger Arbitrage
Money Markets
MBS | Mortgage Backed Securities
Municipal Bonds

Mutual Funds
Options
Private Equity
Treasury
Whole Loans
Yankee Bonds



Healthcare Services

Clients Coverage

Digital Health Technology
Health Information Exchanges
Healthcare | Hospital Providers
Healthcare Private Equity
Healthcare Venture Capital
Life Sciences | Big Pharma
Management Consultants

Job Functions Coverage

Accounting | Finance
Administration
Compliance | Privacy
EHR | EMR Interoperability | Integrations
Human Resources
Management Consulting
Project Management
Sales Executives
Technology Development
Technology Infrastructure

Manufacturing Services



Job Functions Coverage

Accounting Services
Automation Engineer
Assembly Engineer
Cost Accounting
Human Resources
Logistics
Maintenance
Plant Controller
Plant | General Manager
Process Control Engineer
Process Engineer
Project Engineer
Quality Engineer
Supply Chain
Technical Services
Technology Development
Technology Infrastructure
Warehouse Automation

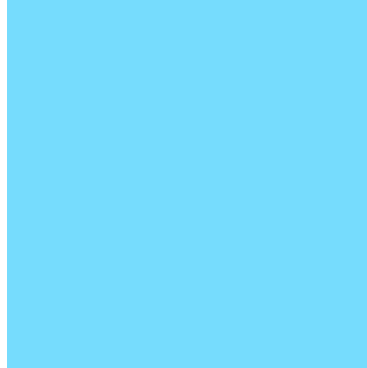
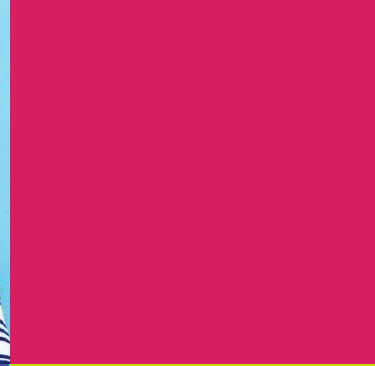
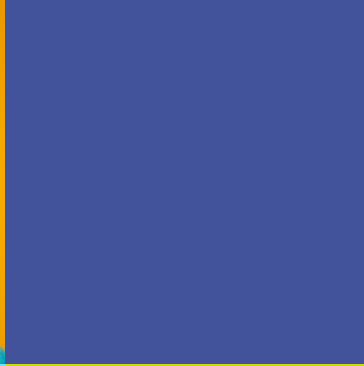


Clients Coverage

Aerospace
Apparel | Leather | Textile
Automotive | Transportation
Chemical | Coatings | Paint
Electronics
Food
Furniture
Metal | Paper | Plastic | Rubber | Wood
Pharmaceutical



mosaic | **partners**
diversity & inclusion talent specialists



Accounting | Finance Services

Industry Coverage

Aerospace	Construction	Healthcare	Primary Education
Agriculture	Electronics	Manufacturing	Real Estate
Automotive	Energy	Marketing	Retail
Aviation	Finance	Mining	Transportation
Chemical	Financial Services	Primary Education	Utilities
Commerce	Food	Real Estate	

Job Functions Coverage

Accountant	Controller	FP&A
Accounts Payable	CAO Chief Accounting Officer	Forensic Accountant
Accounts Receivable	CFO Chief Financial Officer	Property Accountant
Auditor	CPA Certified Public Accountant	Staff Accountant
Bookkeeper	CRO Chief Revenue Officer	Tax Accountant
Comptroller	Financial Analyst	

mosaic | partners

diversity & inclusion talent specialists

Technology Services

Industry Coverage

Aerospace
Agriculture
Automotive
Aviation
Chemical
Commerce
Construction
Electronics

Energy
Finance
Financial Services
Food
Healthcare
Manufacturing
Marketing
Mining

Primary Education
Real Estate
Retail
Transportation
Utilities

Job Functions Coverage

Applications Engineer
Business Intelligence
CIO | Chief Information Officer
CTO | Chief Technology Officer
Cloud Engineer
Computer Programmer
Computer Scientist
Cyber Security
Database Administrator
Data Quality Manager
Data Scientist

Data Scientist
Help Desk Technician
Information Security Analyst
IT Auditor
IT Coordinator
IT Director
IT Security Specialist
Network Engineer
Project Management
Quality Assurance Tester

Site Reliability Engineer
Software Developer
Software Engineer
Software Quality
Support Specialist
Systems Administrator
Systems Analyst
User Experience Designer
Web Administrator
Web Developer

Human Resources Services

Industry Coverage

Aerospace	Energy	Primary Education
Agriculture	Finance	Real Estate
Automotive	Financial Services	Retail
Aviation	Food	Transportation
Chemical	Healthcare	Utilities
Commerce	Manufacturing	
Construction	Marketing	
Electronics	Mining	

Job Functions Coverage

Chief Wellness Officer	Human Resources Generalist
Compensation & Benefits Specialist	Human Resources Manager
CPO Chief People Officer	Human Resources Specialist
CTO Chief Talent Officer	Labor Relations
Employee Relations Manager	Learning & Development
Employment Specialist	Recruiter Talent Acquisition
Director of Employee Experience	Recruitment Manager
Diversity, Equity, Inclusion & Belonging	
Human Resources Business Partner	
Human Resources Coordinator	
Human Resources Data Scientist	
Human Resources Director	



Mosaic Partners | Minority Owned Firm | info@recruitmosaic.com | www.recruitmosaic.com

mosaic | **partners**
diversity & inclusion talent specialists